



PIONEER DEVELOPERS
No. 50/725, 1st Floor, PRMR Plaza,
Birla compound, Kurnool - 518002 AP.

Mobile: +91 9880112222
E-mail: sales@pioneerdevelopers.co.in

www.pioneerdevelopers.co.in

This brochure is conceptual and not a legal offering. The promoters reserve the right to make additions, alterations or changes in specifications as required from time to time.

LIVING SPACES Ph: +91 9880112222



Light up
your moments
with richness
of life

Pioneer
moonlite
2 BHK Luxury Apartments
Dhanalakshmi Nagar, Kurnool



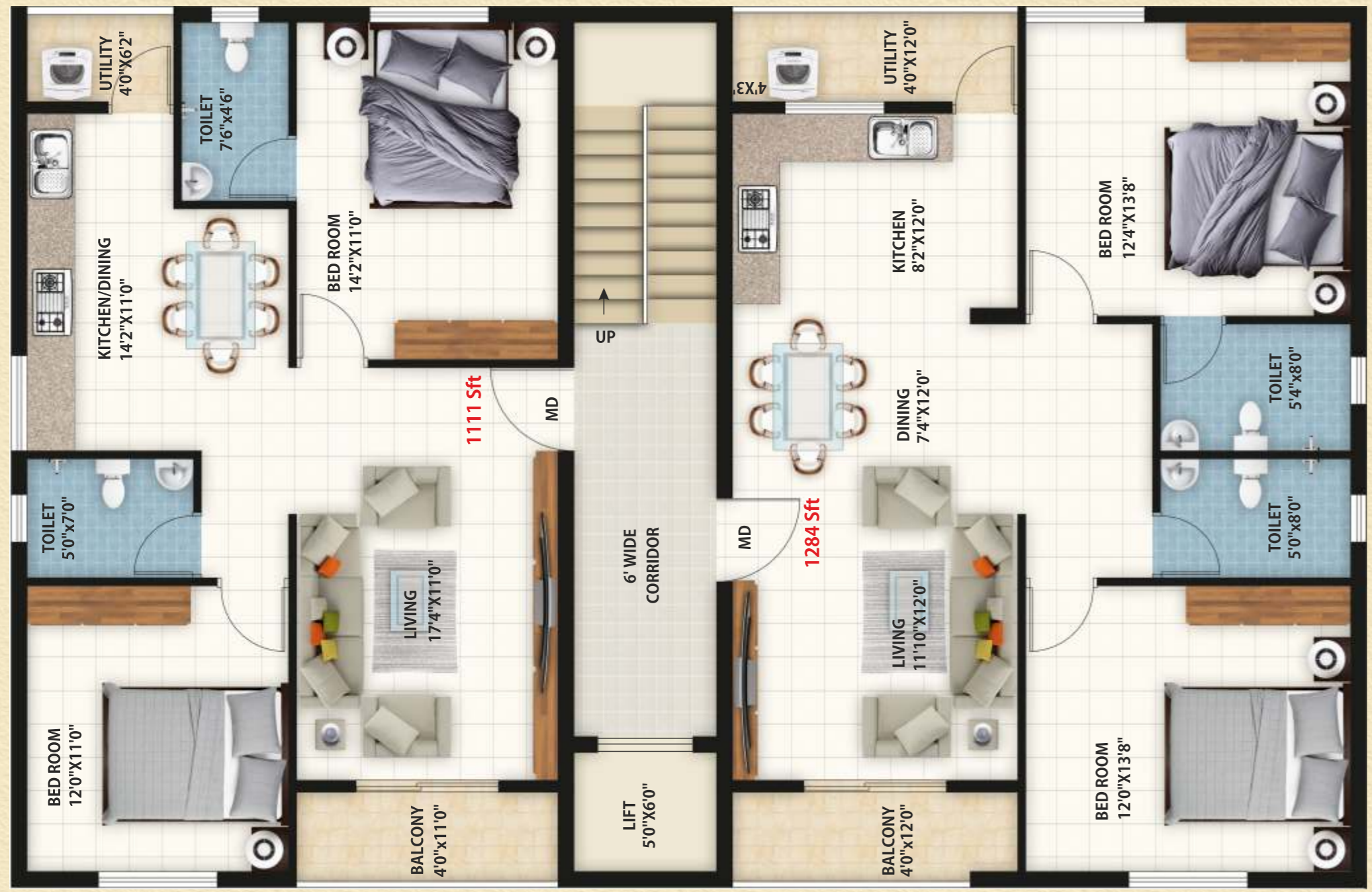
Pioneer
moonlite
2 BHK Luxury Apartments
Dhanalakshmi Layout, Kurnool

Where life begins and love never ends

Unconditional love that binds a family is the most precious treasure one can find to lead a life of happiness. The shine of this treasure gets amplified in a surrounding of peace and tranquility as they are a part of nature which can be found in abundance here with plenty of untouched open space and greenery. At Moonlite, our homes give you no reason to ask for more.



TYPICAL FLOOR PLAN (G+4Floors)



A harmony of simplicity and grandeur

With just two flats per floor, comprising of Stilt +G+4Floors, one can enjoy both the privacy and friendly neighbour hood . Not just that. The very exterior, with its grand look, is sure to make its residents feel proud of their address. The design, shade and other architectural aspects blend with the changing hues in the background through the day. Not residing here could be like missing one of the best dwelling in life .



2BHK : 1284Sft
East Facing



2BHK : 1111Sft
West Facing

Specifications

STRUCTURE:

- RCC framed structure conforming to IS code for earthquake & wind loads using JSW Steel or equivalent brand. Ramco, ACC, ULTRA TECH WITH 53 GRADE OPCCEMENT.

WALLS:

- 8 inch external wall, 4 inch internal walls with AAC blocks.

DOORS & WINDOWS:

- Main Door: Teak wood door frame with 35 mm thick Teak wood door shutter with brass fitting finished with polish.
- Internal doors: Sal wood door frame with 30mm thick Laminated shutter , And W P C Door frames with W P C Shutters for toilets and utilities.
- UPVC 3track sliding windows with mosquito mesh and safety grills.
- Alluminium ventilators and safety grills in toilet.
- Locks: Europa or Equivalent Brand.

ELECTRICAL:

- Wires of Anchor/Havells/lapp India make.
- Elegant modular electrical switches of Schneider/ Crabtree make.
- Two earth leakage circuit breaker (ELCB) for lighting & power in each flat of legrand make.
- Miniature circuit breakers (MCB) for lighting & power circuits.
- Telephone points in MBR and living area.
- A/C power point in master bed room.
- 1KVA DG power back up for each flat and 100% back up for common area

and amenities with Mahindra or ashok Leyland brand.

LIFT:

- 6passenger Gearless automatic lift with KONE make or Jhonson equivalent brand (consumes 53% less Power).

PAINTING:

- Smooth putty with Two coats Plastic emulsion for interior walls with roller finish and ACE & APEX for external wall, Asian paints or equivalent brand.

FLOORING:

- Granite flooring & cladding in entrance lobby, common passage and staircase.
- Premium quality vitrified tiles of size 2ft x 4ft for living, dining & kitchen.
- Premium quality double charged vitrified tiles of size 2ft x 2ft for master bedroom, children bedroom & guest room.
- Anti-skid ceramic tiles for balcony & utility.

KITCHEN:

- Edge polished 30mm granite platform with CARYSIL German engineered steel sink.
- Ceramic tile cladding of 2feet above granite counter.
- Provision for water purifier, chimney and hob.
- Provision for gas cylinder, washing machine in utility.



TOILET FITTINGS AND ACCESSORIES :

- Sanitary fixtures of hindware brand white European water closets and wash basins.
- Jaguar or equivalent CP fittings.
- Superior quality anti-skid ceramic tile flooring.
- Superior quality ceramic wall tile cladding up to 7ft height.

Amenities :

- C C Cameras in common area.
- Electric car charging point at individual car parking
- Intercom facility

Route Map

Above and beyond mere drawing-board planning

Immersing in natural air and light and freedom of movement need not mean leaving space unutilized. Proper dimension-planning including traditional wisdom of vaastu, benefits of modern architecture and the dictates of artistic guidelines has gone into creating a layout that uses space optimally to make every moment of living worth it.

So near, yet so far

Yes, you are so near to the urban comforts, yet far away from the chaos and pollution. Nestled away in quiet vicinity, Moonlite offers the advantage of best locations for a life of peace and tranquility. A mere hop-skip-jump away, you find landmarks comprising hospitals, educational institutions, malls and markets, entertainment centres, business hubs, offices, etc. Well-connected by roads and metro services, along with both private and public transit systems .

